



MISSION STATEMENT:

The mission of the Network of New England is to facilitate the improvement of health care and quality of life for individuals who have chronic kidney disease and those treated with dialysis or transplantation.

**2006
STATISTICAL
SUMMARY**

**END STAGE RENAL DISEASE
NETWORK OF NEW ENGLAND, INC.**

30 Hazel Terrace, Woodbridge, CT 06525

Phone: (203) 387-9332 Fax: (203) 389-9902

Website: www.networkofnewengland.org

Email: info@nw1.esrd.net

The Statistical Summary is written, designed, distributed and published by the Network of New England while under contract with Centers for Medicare and Medicaid Services, Baltimore, Maryland. Contract # HHSM-500-2006-NW001C

NETWORK OF NEW ENGLAND ESRD STATISTICS

Each year The Network of New England prepares a statistical summary report of the most frequently requested demographic information related to the ESRD patient population in the six New England states. This 2006 statistical report contains data displayed for each of the six states and the Network. Several of the tables and figures have trend data for the past several years which provides a historical picture of the continuous growth in ESRD; providers are offering dialysis and kidney transplantation services to an increasing number of individuals requiring these life-sustaining services.

HIGHLIGHTS:

❑ **New ESRD Patients Initiating Dialysis – Page 3**

Data are reported by the first outpatient facility providing chronic dialysis. The average age of these patients continues to rise. In 1989, the average age for new patients was 56; in 2006, it is 65, an indicator of a more complex patient population requiring additional geriatric clinical services.

❑ **Prevalence of ESRD Dialysis Patients by State of Provider – Page 4**

In the mid 1990s, an annual increase in the number of dialysis patients was observed at approximately 6% to 9% per year. However, the annual prevalence growth in recent years for New England has been around 3%, with an increase of 2% between 2005 and 2006.

❑ **Dialysis Patient Characteristics – Page 5**

In 2006, 39.3% of dialysis patients have diabetes as their primary cause of renal failure, followed by 22.5% with hypertension. More males (57%) than females (43%) are on dialysis. More than half of total prevalent patients (52.8%) were age 65 or older.

❑ **Incenter & Home Patients in New England – Pages 6 - 12**

List of dialysis provider year-end census displayed by state.

❑ **ESRD Resources in New England as of 12/31/06 – Page 13**

The number of ESRD providers increased by 1.3% in 2006. This table lists the number of ESRD providers and the number of chronic dialysis treatment stations by state and Network. There was increased activity in the acquisition and change of ownership in dialysis units by large dialysis corporations in 2006.

❑ **2006 Dialysis Prevalence by Modality: State and Network – Page 14**

This Network has 10.6% of the dialysis population receiving home care. There is a wide variation among the states in the proportion of patients at home. For 2006, the lowest is Rhode Island (2.9%) and the highest is Connecticut (16.3%).

❑ **Crude Dialysis Mortality Rate – Page 15**

The annual unadjusted mortality rate for the dialysis population has not changed in the last 5 years. The Network's crude death rate in 2006 was at 22.6%. The leading cause of death in 2006 was cardiac related events.

❑ **Transplant Data by Year – Pages 16 & 17**

This table reports the number of kidney transplants performed by each transplant center in New England between 1989– 2006. The total number of transplants performed annually during the past fifteen years has increased steadily in this Network.

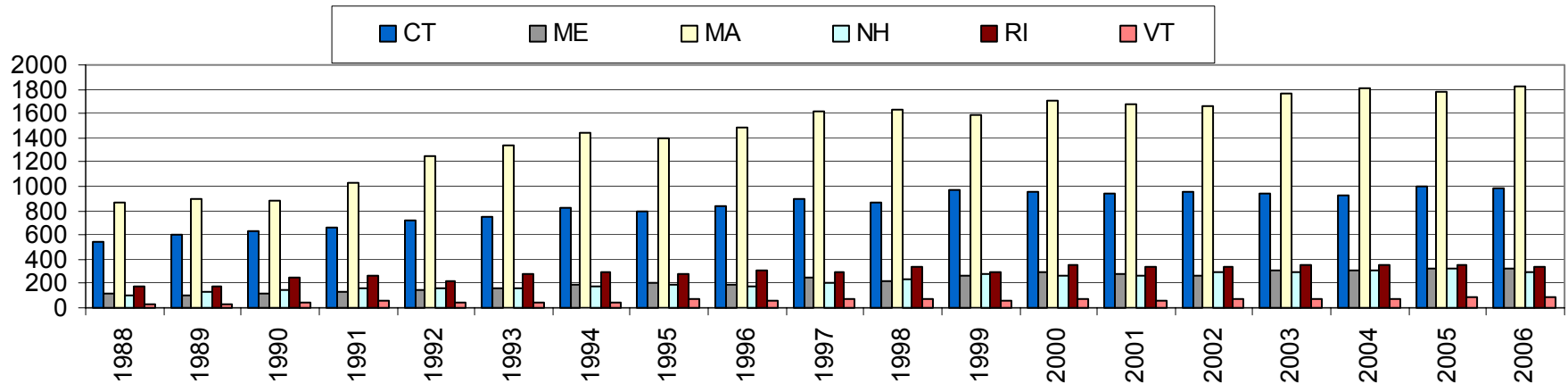
❑ **Kidney Transplantation by Donor Type – Page 18**

In 2006, 42.2% of the transplants performed were from living (related and non-related) donors.

❑ **Vocational Rehabilitation – Page 19**

The annual 2006 facility survey indicated that 33.7% of ESRD patients between the ages of 18–54 received either vocational rehabilitation services, or were full-time or part-time employees, or students. There is a modest increase of 1.9% in patients receiving vocational rehabilitation services in 2006 from 31.8% in 2005. The number of facilities that provide shifts after 5 PM in 2006 was 34%.

New ESRD Patients Initiating Dialysis by State of Provider 1990 – 2006



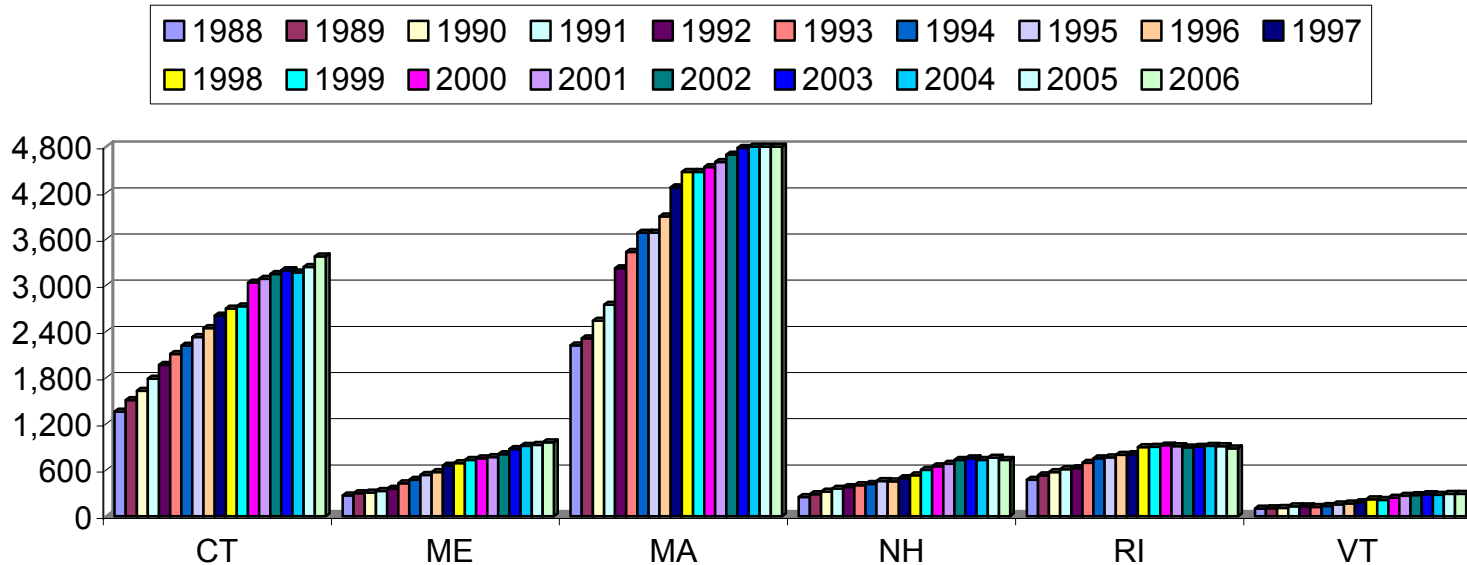
Year	CT	ME	MA	NH	RI	VT	Network
1988	546	113	868	110	177	33	1,847
1989	609	105	895	137	175	35	1,956
1990	636	112	886	149	243	40	2,066
1991	668	139	1,031	161	260	53	2,312
1992	724	145	1,254	161	222	39	2,545
1993	754	164	1,336	160	281	45	2,740
1994	828	185	1,446	175	295	45	2,974
1995	788	207	1,396	186	274	72	2,923
1996	844	187	1,480	181	302	61	3,055

Year	CT	ME	MA	NH	RI	VT	Network
1997	895	253	1,620	205	301	71	3,345
1998	863	225	1,629	228	331	75	3,351
1999	971	261	1,586	274	292	62	3,446
2000	955	288	1,701	260	353	79	3,636
2001	937	276	1,683	266	339	62	3,563
2002	953	258	1,656	298	340	69	3,574
2003	946	313	1,837	309	366	77	3,848
2004	932	311	1,810	310	353	70	3,786
2005	996	327	1,773	326	360	92	3,874
2006	982	328	1,825	293	335	93	3,856

Source: CMS Facility Survey

Includes all patients at VA facilities for 1988 - 2006 (June 2007)

Prevalence of ESRD Dialysis Patients by State of Provider 1990 – 2006

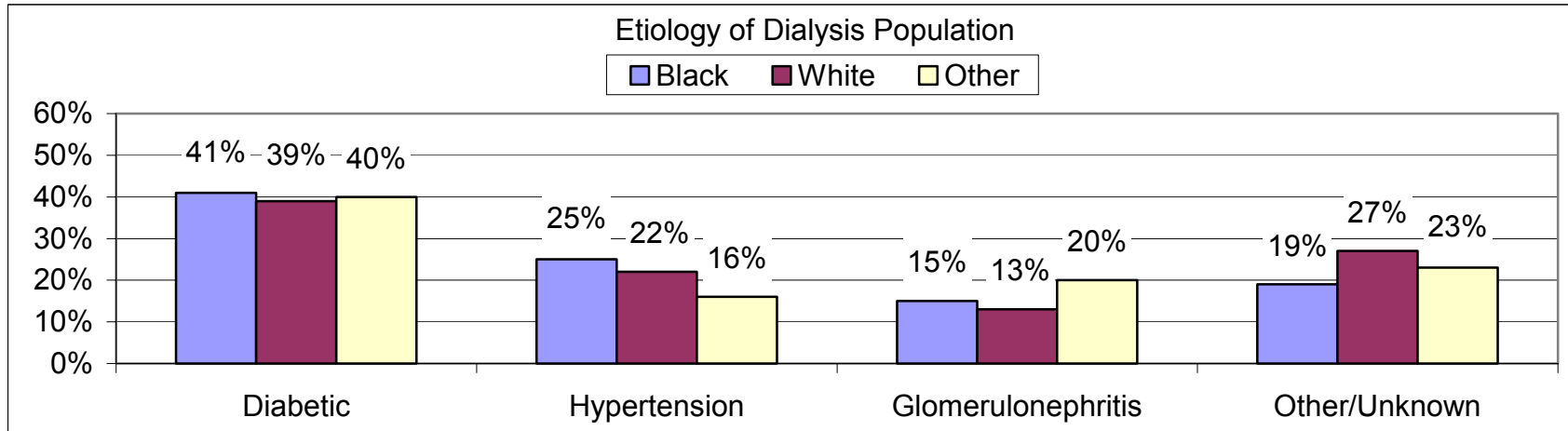
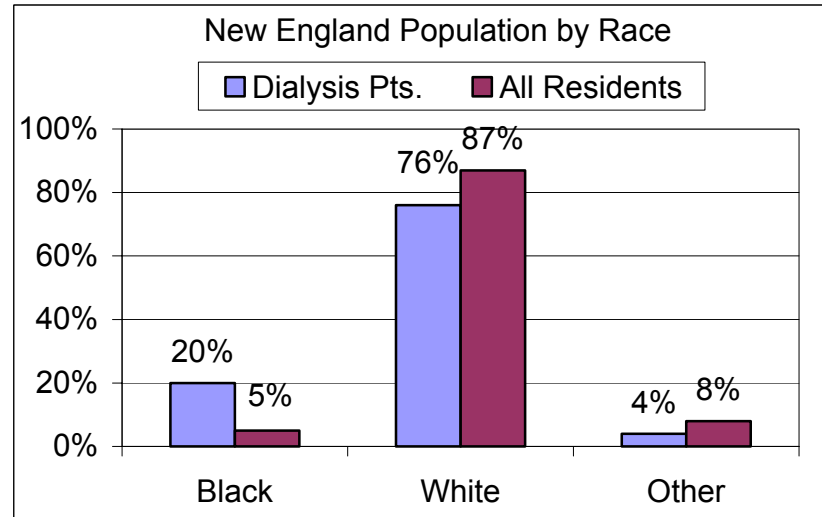
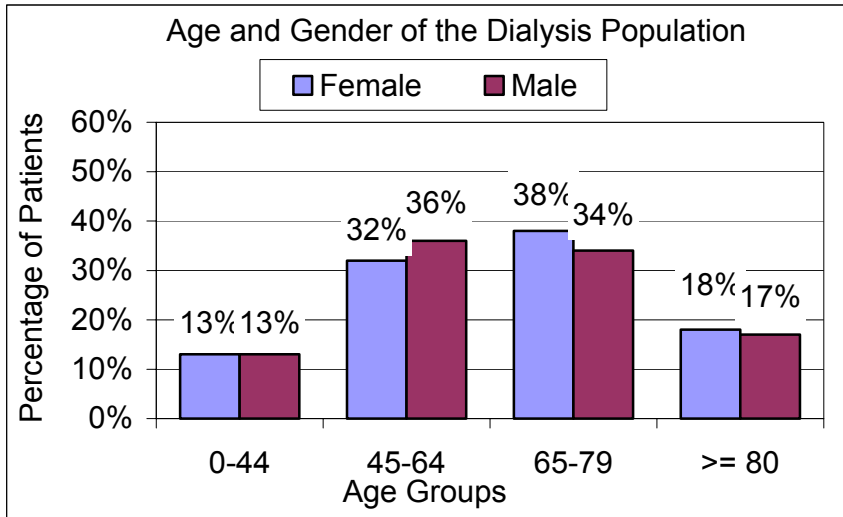


Year	CT	ME	MA	NH	RI	VT	Network
1988	1,359	271	2,220	249	473	98	4,670
1989	1,508	299	2,309	287	531	101	5,035
1990	1,628	306	2,541	318	574	108	5,475
1991	1,786	328	2,746	357	612	127	5,956
1992	1,967	358	3,223	377	624	127	6,676
1993	2,106	426	3,433	401	693	121	7,180
1994	2,214	473	3,683	421	751	134	7,676
1995	2,328	534	3,683	457	764	153	7,919
1996	2,442	572	3,895	451	799	165	8,324

Year	CT	ME	MA	NH	RI	VT	Network
1997	2,607	655	4,271	493	807	182	9,015
1998	2,696	690	4,474	531	897	221	9,509
1999	2,725	732	4,472	604	901	213	9,647
2000	3,035	752	4,535	648	920	241	10,131
2001	3,083	767	4,601	682	910	266	10,309
2002	3,146	806	4,698	732	894	272	10,548
2003	3,196	870	4,783	751	903	288	10,791
2004	3,168	916	4,880	732	913	277	10,886
2005	3,237	927	4,981	758	908	289	11,100
2006	3,377	958	5,091	731	880	291	11,328

Source: SIMS Network # 1 Database
Includes all patients at VA facilities for 1988 - 2006 (June 2007)

Dialysis Patient Characteristics in New England Dialysis Population 12/31/06



Source: Network Patient Registry June 2007
Incenter & Home Patients in New England

Connecticut Dialysis Providers as of 12/31/06

CT PROVIDERS	Provider #	Incenter	Home	Total
BLOOMFIELD DIALYSIS	072528	48	0	48
BRANFORD DIALYSIS	072517	66	0	66
BRIDGEPORT DIALYSIS	072501	212	70	282
CENTRAL CT DIALYSIS CENTER	072508	106	5	111
DANBURY HOSPITAL	070033	91	14	105
DIALYSIS CENTER OF NEWINGTON	072505	64	1	65
EAST HARTFORD DIALYSIS CENTER	072509	115	12	127
ENFIELD DIALYSIS CENTER	072506	55	6	61
FMC DIALYSIS SERVICES FORESTVILLE	072527	72	11	83
GREATER WATERBURY DIALYSIS	072511	182	35	217
HARTFORD DIALYSIS	072516	117	33	150
HARTFORD HOSPITAL	070025	174	35	209
MIDDLESEX DIALYSIS CENTER, LLC.	072524	75	15	90
MILFORD DIALYSIS	072514	71	0	71
MILFORD DIALYSIS CENTER	072513	95	0	95
NEW BRITAIN GENERAL HOSPITAL	070035	101	25	126
NEW HAVEN CAPD	072503	0	93	93
NEW HAVEN DIALYSIS	072507	104	83	187
NEW LONDON DIALYSIS	072515	85	21	106
NORWICH DIALYSIS	072520	57	24	81
PHYSICIANS DIALYSIS INC., - ROCKY HILL	072518	86	4	90
SHELTON DIALYSIS	072510	89	0	89
SHORELINE DIALYSIS CENTER	072522	68	0	68
SOUTH NORWALK DIALYSIS	072521	103	10	113
ST. RAPHAEL DIALYSIS CENTER - NEW HAVEN	072512	183	0	183
STAMFORD DIALYSIS	072504	128	20	148

CT PROVIDERS	Provider #	Incenter	Home	Total
TORRINGTON DIALYSIS	072523	69	24	93
UCONN DIALYSIS CENTER	072519	78	5	83
VA MEDICAL CENTER - WEST HAVEN	07003F	22	1	23
VERNON DIALYSIS CENTER	072529	92	2	94
WINDHAM DIALYSIS CENTER	072530	20	0	20
TOTAL	N/A	2,828	549	3,377

Massachusetts Dialysis Providers as of 12/31/05

MA PROVIDERS	Provider #	Incenter	Home	Total
ARTIFICIAL KIDNEY CENTER OF FALL RIVER (BMA FALL RIVER)	222516	45	1	46
BERKSHIRE MEDICAL CENTER	220046	111	11	122
BMA OF CHICOPEE	222513	85	28	113
BOSTON DIALYSIS	222526	158	46	204
BOSTON DIALYSIS CENTER (BMA BOSTON)	222506	72	0	72
BRIGHAM AND WOMEN'S HOSPITAL	220110	4	0	4
BROCKTON DIALYSIS CENTER (BMA OF MASSACHUSETTS)	222505	85	8	93
BROOKLINE DIALYSIS	222529	117	21	138
CAPE COD ARTIFICIAL KIDNEY CENTER (BMA CAPE COD)	222501	75	12	87
CHILDREN'S HOSPITAL BOSTON	223302	19	11	30
DCI BALL SQUARE	222549	72	18	90
DCI BILLERICA	222554	64	2	66
DCI BRIGHAM/FAULKNER	222552	98	15	113
DCI WALDEN POND	222559	47	0	47
DIALYSIS CENTER OF FALL RIVER	222566	33	0	33
DIALYSIS CLINIC, INC. (DCI BOSTON)	222508	98	0	98
EAST SPRINGFIELD DIALYSIS (BMA OF MASSACHUSETTS)	222535	58	0	58

MA PROVIDERS	Provider #	Incenter	Home	Total
FMC DIALYSIS SERVICES OF BLACKSTONE VALLEY	222551	58	2	60
FMC DIALYSIS SERVICES OF PALMER	222557	53	0	53
FMC OF NEWBURYPORT	222562	27	5	32
FMC SERVICES OF STONEHAM	222524	53	0	53
FRESENIUS MEDICAL CARE OF MASHPEE	222553	60	6	66
FRESENIUS MEDICAL CARE OF METHUEN	222565	50	1	51
FRESENIUS MEDICAL CARE OF PLYMOUTH CORDAGE	222567	59	5	64
GODDARD BROCKTON KIDNEY CENTER	222523	96	6	102
HAMPSHIRE COUNTY DIALYSIS CENTER	222537	60	0	60
HYDE PARK DIALYSIS CENTER	222547	44	0	44
KIDNEY CENTER	222500	54	0	54
LEMUEL SHATTUCK HOSPITAL	222006	18	0	18
LUDLOW DIALYSIS CENTER	222555	27	0	27
MALDEN DIALYSIS	222542	66	2	68
MARTHA'S VINEYARD HOSPITAL	220123	8	0	8
MARY ELIZA MAHONEY DIALYSIS CENTER (BMA OF MASS)	222525	36	0	36
MASSACHUSETTS GENERAL HOSPITAL	220071	4	18	22
MEDFORD DIALYSIS CENTER (BMA MEDFORD)	222507	71	0	71
MIDDLESEX COUNTY DIALYSIS	222556	62	5	67
NANTUCKET COTTAGE HOSPITAL	220081	1	0	1
NEW BEDFORD DIALYSIS	222530	66	6	72
NEW ENGLAND MEDICAL CENTER	220116	0	0	0
NORTH SHORE REGIONAL DIALYSIS CENTER	222550	90	5	95
NORTH SUBURBAN DIALYSIS CENTER (BMA ESSEX COUNTY)	222512	101	6	107
NORTHEAST CAMBRIDGE DIALYSIS	222533	80	7	87
NORWOOD DIALYSIS CENTER	222548	29	0	29
NRI - AMESBURY	222532	36	0	36
NRI - NORTH ANDOVER	222545	67	14	81
PDI - WORCESTER	222564	116	16	132

MA PROVIDERS	Provider #	Incenter	Home	Total
PEABODY DIALYSIS CENTER	222546	57	5	62
PERSONAL DIALYSIS, INC.	222563	0	27	27
PHYSICIANS DIALYSIS INC., - FITCHBURG	222536	85	8	93
PIONEER VALLEY DIALYSIS CENTER	222538	119	9	128
QUALITY CARE DIALYSIS CENTER	222519	53	9	62
SAINT ELIZABETH'S MEDICAL CENTER OF BOSTON	220036	96	2	98
SAINT VINCENT'S HOSPITAL	220028	68	16	84
SAINTS MEMORIAL MED CTR/MERRIMACK VALLEY DIALYSIS - LOWELL	223503	84	13	97
SAINTS MEMORIAL MED CTR/MERRIMACK VALLEY DIALYSIS - MAIN	220082	48	0	48
SAINTS MEMORIAL MED CTR/MERRIMACK VALLEY DIALYSIS - METHUEN	223501	103	0	103
SALEM NORTHEAST DIALYSIS	222543	78	10	88
SOUTH COUNTY DIALYSIS CENTER	222561	57	1	58
SOUTH SUBURBAN DIALYSIS FACILITY	222515	72	0	72
SOUTHEASTERN MASSACHUSETTS DIALYSIS CLINIC	222503	121	10	131
SPRINGFIELD DIALYSIS CENTER	222560	74	22	96
TAUNTON KIDNEY CENTER	222544	79	8	87
THE DIALYSIS CENTER AT WALTHAM	222568	33	0	33
U-MASS MEMORIAL HEALTH CARE SYSTEMS	220163	5	0	5
UMASS MEMORIAL MEDICAL CENTER ESRD	223504	5	0	5
UNIVERSITY DIALYSIS CENTER (BMA OF SHREWSBURY)	222521	81	5	86
VA MEDICAL CENTER - BOSTON	22010F	25	0	25
WELLESLEY DIALYSIS	222534	55	6	61
WEST SUBURBAN ARTIFICIAL KIDNEY CENTER (BMA FRAMINGHAM)	222504	89	0	89
WESTERN MASS. KIDNEY CENTER (BMA SPRINGFIELD)	222502	164	0	164
WESTWOOD DIALYSIS CENTER (BMA WESTWOOD)	222511	64	0	64
WEYMOUTH DIALYSIS	222517	91	12	103
WOBURN DIALYSIS	222520	52	9	61
YANKEE FAMILY DIALYSIS CENTER	222539	40	11	51

Maine Dialysis Providers as of 12/31/06

ME PROVIDERS	Provider #	Incenter	Home	Total
ANDROSCOGGIN KIDNEY CENTER	202506	48	14	62
CASCO BAY DIALYSIS FACILITY	202505	94	1	95
COASTAL DIALYSIS CENTER	202502	47	0	47
COUNTY DIALYSIS CENTER	200018	50	0	50
DAMARISCOTTA DIALYSIS	202507	31	7	38
DCI SKOWHEGAN	202509	28	0	28
DIALYSIS CLINIC INC. - BELFAST	202511	16	0	16
EASTERN MAINE DIALYSIS	203500	42	0	42
EASTERN MAINE MEDICAL CENTER	200033	92	21	113
KENNEBEC KIDNEY CENTER	202504	45	7	52
LEWISTON AUBURN KIDNEY CENTER	202501	57	0	57
LINCOLN LAKES REGION DIALYSIS	203501	26	0	26
MAINEGENERAL MEDICAL CENTER	200039	42	10	52
SOUTHERN MAINE DIALYSIS FACILITY	202500	99	18	117
SUNRISE COUNTY DIALYSIS	202510	17	2	19
UMBAGOG KIDNEY CENTER	202508	38	3	41
VA MEDICAL CENTER - TOGUS	20003F	21	0	21
WALDO COUNTY GENERAL HOSPITAL	200013	0	0	0
YORK COUNTY DIALYSIS CENTER	202503	82	0	82
TOTAL	N/A	875	83	958

New Hampshire Dialysis Providers as of 12/31/06

NH PROVIDERS	Provider #	Incenter	Home	Total
CENTRAL NEW HAMPSHIRE KIDNEY CENTER	302503	48	1	49
FMC DIALYSIS SERVICES OF EXETER	302506	55	0	55

NH PROVIDERS	Provider #	Incenter	Home	Total
FRESENIUS MEDICAL CARE OF LANCASTER	302508	48	1	49
FRESENIUS MEDICAL CARE OF LEBANON	302509	86	15	101
MANCHESTER KIDNEY CENTER	302502	90	13	103
MONADNOCK DIALYSIS CENTER	302504	53	0	53
NASHUA DIALYSIS	302507	79	20	99
NEW HAMPSHIRE KIDNEY CENTER (FMC)	302500	66	11	77
SEACOAST DIALYSIS	302501	59	9	68
SOMERSWORTH DIALYSIS CENTER (BMA OF NEW HAMPSHIRE)	302505	77	0	77
TOTAL	N/A	661	70	731

Rhode Island Dialysis Providers as of 12/31/06

RI PROVIDERS	Provider #	Incenter	Home	Total
ARTIFICIAL KIDNEY CENTER OF NORTH PROVIDENCE	412506	57	3	60
ARTIFICIAL KIDNEY CENTER OF RHODE ISLAND	412500	16	0	16
DIALYSIS CENTER OF CRANSTON	412513	28	0	28
DIALYSIS CENTER OF EAST PROVIDENCE	412512	71	6	77
DIALYSIS CENTER OF JOHNSTON	412514	26	0	26
DIALYSIS CENTER OF PAWTUCKET	412509	51	0	51
DIALYSIS CENTER OF PROVIDENCE	412510	72	0	72
DIALYSIS CENTER OF TIVERTON	412508	59	0	59
DIALYSIS CENTER OF WAKEFIELD	412507	41	0	41
DIALYSIS CENTER OF WEST WARWICK	412504	84	0	84
DIALYSIS CENTER OF WESTERLY	412502	47	0	47
DIALYSIS CENTER OF WOONSOCKET	412503	49	0	49
FRESENIUS MEDICAL CARE OF WARWICK	412501	85	5	90
MIRIAM HOSPITAL	410012	0	0	0

RI PROVIDERS	Provider #	Incenter	Home	Total
NNA - PAWTUCKET	412511	38	0	38
NNA OF PROVIDENCE	412505	108	11	119
RHODE ISLAND HOSPITAL	410007	5	0	5
VA MEDICAL CENTER - PROVIDENCE	41002F	18	0	18
TOTAL	N/A	855	25	880

Vermont Dialysis Providers as of 12/31/06

VT PROVIDERS	Provider #	Incenter	Home	Total
FLETCHER ALLEN HEALTHCARE - BARRE SATELLITE	473500	50	0	50
FLETCHER ALLEN HEALTHCARE - CHITTENDEN COUNTY DIALYSIS	473503	73	11	83
FLETCHER ALLEN HEALTHCARE - MED CTR HOSP OF VT CAMPUS	470003	9	0	9
FLETCHER ALLEN HEALTHCARE - RPMC SATELLITE	473501	49	1	50
FLETCHER ALLEN HEALTHCARE - ST. ALBANS SATELLITE	473502	46	0	46
NORTH COUNTRY DIALYSIS UNIT	473504	16	0	16
SOUTHWESTERN VT - FLETCHER ALLEN DIALYSIS SERVICES LLC	472500	36	0	36
TOTAL	N/A	279	12	291
NETWORK TOTAL	N/A	10,129	1,199	11,328

Source: CMS Facility Survey: Network of New England. Prepared June 2007

ESRD Resources in New England 12/31/06

State	Dialysis Stations*	Percent of Total	Dialysis Providers	Percent of Total	Transplant Centers	Percent of Total
CT	641	24	31	20	2	13.3
ME	247	9	18	11	1	6.7
MA	1241	45	74	47	9	60.0
NH	180	7	10	6	1	6.7
RI	315	13	18	12	1	6.7
VT	71	2	7	4	1	6.7
Totals	2695	100	158	100	15	99.7

Note: In 2006, an additional 56 dialysis stations (including isolation stations) were added in New England. New England ESRD (outpatient) dialysis providers and kidney transplant centers are certified by either Medicare or the Veterans Administration Program.

Data Source: Network Facility Survey and Provider Files (12/31/06).
Prepared: June 2007*

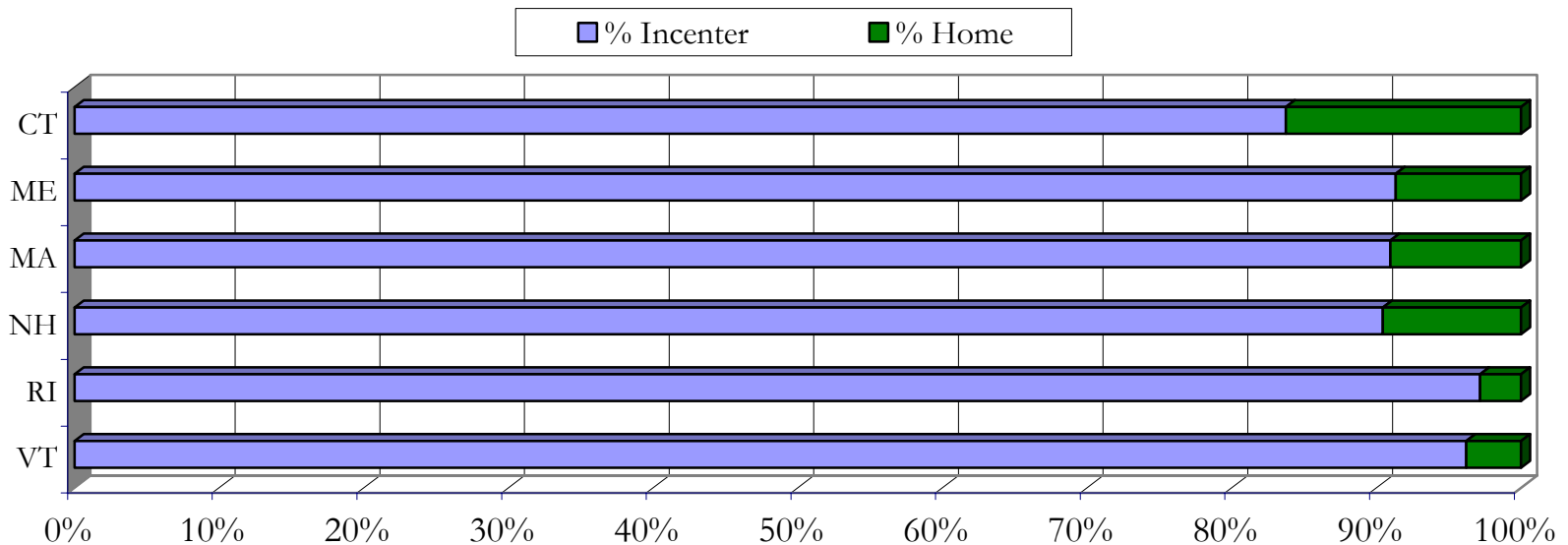
2006 Dialysis Prevalence by Modality: Provider of Service

State	Total Incenter	Home Hemo	IPD	CAPD	CCPD	Total Home	Total Patients
CT	2,828	11	0	184	354	549	3,377
ME	875	12	1	24	46	83	958
MA	4,631	54	0	147	260	460	5,091
NH	661	0	0	31	39	70	731
RI	855	3	0	6	16	25	880
VT	279	5	0	1	5	12	291
Network 1	10,129	85	1	393	720	1199	11,328

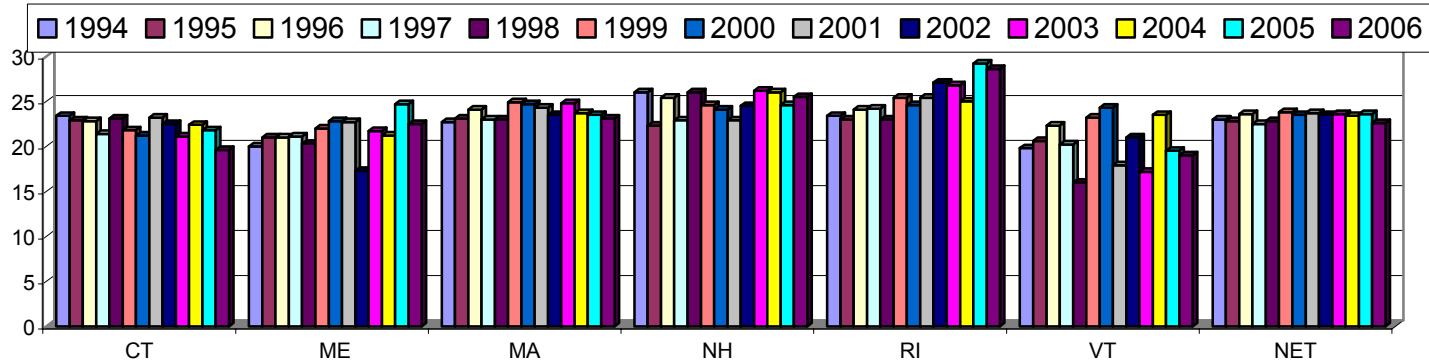
Prepared by the Network of New England, Inc. June 2007

Source: CMS Facility Survey (Includes all patients at VA facilities in New England)

Incenter Dialysis and Home Dialysis Percentage of Total Patients Per State



Crude Dialysis Mortality Rate 1994 – 2006 Percent of Survey Population Expired



Year	CT	ME	MA	NH	RI	VT	Network
1994	23.4	20.0	22.7	26.0	23.4	19.8	23.0
1995	22.9	21.0	23.1	22.3	23.0	20.6	22.8
1996	22.8	21.0	24.1	25.4	24.1	22.3	23.6
1997	21.4	21.1	23.0	22.9	24.2	20.2	22.5
1998	23.1	20.3	23.0	26.0	23.0	16.0	22.8
1999	21.8	22.0	24.9	24.6	25.4	23.2	23.8
2000	21.7	22.8	24.7	24.1	24.6	24.3	23.7
2001	23.2	22.7	24.3	22.9	25.4	17.9	23.7
2002	22.5	17.3	23.5	24.5	27.1	21.0	23.5
2003	21.1	21.7	24.8	26.2	26.8	17.19	23.6
2004	22.4	21.2	23.7	26.0	25.0	23.5	23.4
2005	21.8	24.7	23.5	24.6	29.22	19.52	23.6
2006	19.6	22.5	23.1	25.5	28.6	19.0	22.6

Source: ESRD Network of New England/CMS Survey Form, June 2007

Patients Transplanted by Year ESRD Network of New England

Kidney Transplant Centers	1989	1990	1991	1992	1993	1994	1995	1996	1997
Baystate Medical Center	66	58	53	36	26	31	33	39	49
Beth Israel Deaconess Medical Ctr.	35	46	41	22	29	30	36	35	40
Beth Israel Deaconess Medical Ctr. West	41	40	44	55	62	57	56	75	47
Brigham and Women's Hospital	38	29	39	51	59	57	37	41	65
Children's Hospital	30	23	28	13	16	8	17	20	22
Dartmouth Hitchcock Medical Center	55	56	52	4	27	23	26	30	20
Fletcher Allen Health Care Med. Ctr. of VT	67	60	55	0	5	17	27	24	25
Hartford Hospital	15	14	19	55	76	57	52	64	61
Lahey Clinic	4	6	13	13	12	17	8	7	14
Maine Medical Center	71	71	57	31	31	47	33	31	32
Massachusetts General Hospital	28	33	26	63	50	66	58	55	58
New England Medical Center	25	32	23	25	21	25	32	31	30
Rhode Island Hospital	25	17	33	N/A	N/A	N/A	N/A	N/A	34
University Hospital – BU Medical Center	13	15	11	20	23	25	26	22	29
University of Mass. Medical Center	N/A	N/A	N/A	27	31	31	34	33	26
VA Medical Center – Boston	N/A	N/A	N/A	11	4	7	6	13	5
Yale New Haven Hospital	15	25	15	37	43	46	66	60	70
Network Total	528	525	509	463	515	544	547	580	627

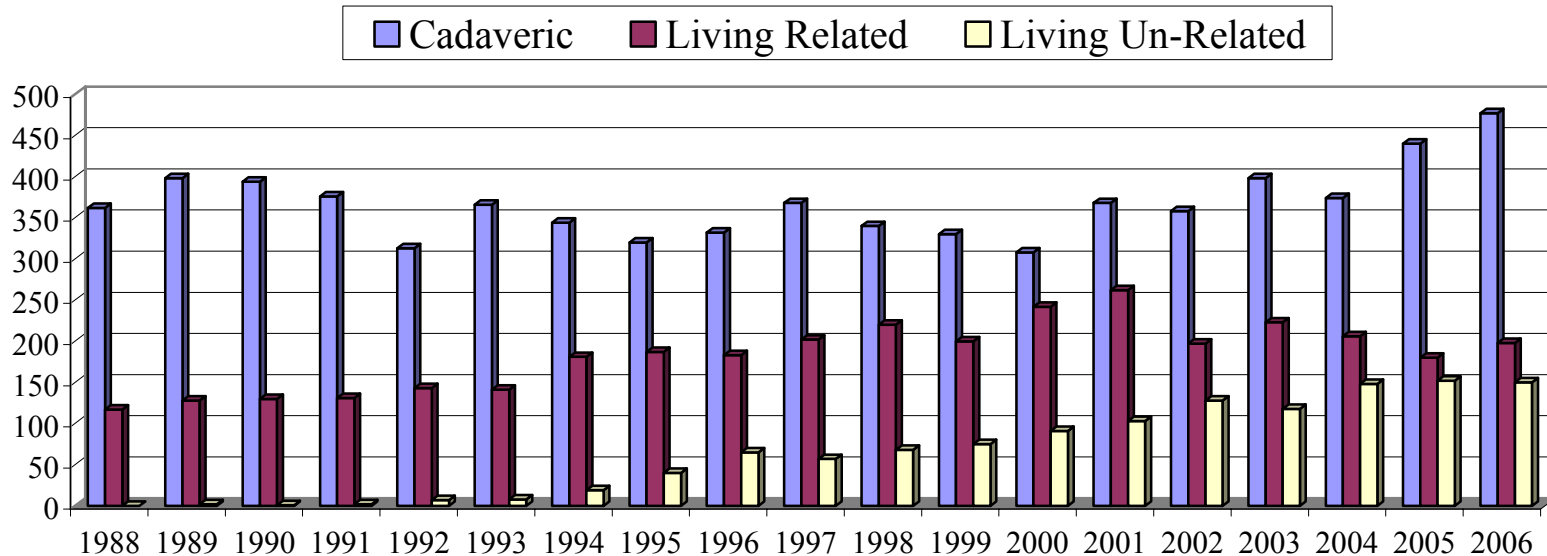
Prepared by Network of New England, Inc. June 2007

Patients Transplanted by Year ESRD Network of New England

Kidney Transplant Centers	1998	1999	2000	2001	2002	2003	2004	2005	2006
Baystate Medical Center	38	38	44	57	39	32	36	24	32
Beth Israel Deaconess Medical Ctr.	78	50	57	49	42	78	79	88	60
Beth Israel Deaconess Medical Ctr. West	N/A	N/A	N/A	N/A	N/A	N/A	N/A	N/A	N/A
Brigham and Women's Hospital	42	39	41	45	44	53	67	65	100
Children's Hospital	14	15	14	17	23	19	12	16	16
Dartmouth Hitchcock Medical Center	26	20	21	25	31	35	36	40	51
Fletcher Allen Health Care Med. Ctr. of VT	22	24	21	6	2	36	23	37	47
Hartford Hospital	59	56	64	72	70	58	63	67	52
Lahey Clinic	8	5	9	24	28	33	34	33	44
Maine Medical Center	50	53	57	83	60	64	60	53	72
Massachusetts General Hospital	67	65	61	69	69	78	76	102	88
New England Medical Center	36	42	51	54	60	51	48	38	45
Rhode Island Hospital	52	53	63	84	85	68	71	72	67
University Hospital – BU Medical Center	23	20	26	33	21	20	33	50	39
University of Mass. Medical Center	35	44	37	46	22	39	29	29	29
VA Medical Center – Boston	4	9	1	N/A	N/A	N/A	N/A	N/A	N/A
Yale New Haven Hospital	74	72	74	67	86	73	61	58	81
Network Total	628	605	641	731	682	737	728	772	823

Prepared by Network of New England, Inc. June 2007

Renal Transplants by Donor Type All Transplant Centers in New England



	1988	1989	1990	1991	1992	1993	1994	1995	1996
Cadaveric	362	398	394	376	313	366	344	320	332
Living Related	117	128	130	131	143	141	181	187	183
Living Un-Related	0	2	1	2	7	8	19	40	65
Total	479	528	525	509	463	515	544	547	580

	1997	1998	1999	2000	2001	2002	2003	2004	2005	2006
Cadaveric	368	340	330	308	368	358	358	374	440	477
Living Related	202	220	200	242	262	197	197	206	180	198
Living Un-Related	57	68	75	91	103	128	128	148	152	150
Total	627	628	605	641	733^a	683^b	739^a	728	772	825^a

^a This number includes 2 patients each having 2 transplants in YR 2001, YR 2003 and YR 2006

^b This number includes 1 patient having 2 transplants in YR 2002

Prepared by Network of New England, Inc., June 2007

Vocational Rehabilitation by State for 2006

State	Number of Dialysis Patients aged 18 –54 (Network List)	Number of dialysis patients receiving services from Voc Rehab and other Voc Rehab related Service providers (Public or Private)	Number of dialysis patients employed full-time or part-time	Number of dialysis patients attending school full-time or part-time	Offers dialysis shift starting at 5 PM or later
CT	962	34	277	23	9
MA	1334	51	351	52	26
ME	228	12	64	4	5
NH	194	4	53	4	5
RI	208	13	45	5	2
VT	57	1	5	1	6
Network	2983	115	795	89	53

Source: Network Annual Survey, Prepared June 2007