

# Fistula First Initiative Update

21<sup>st</sup> Annual Educational Meeting  
ESRD Network of New England  
Sturbridge, MA  
October 15, 2009



## So Close.....

- CMS set a goal of 56.6% AVF rate for your Network to be reached by 3/09
- New England reached a rate of 56.3% in March
- This translated into being 37 AV fistulas short
- CMS has set a new goal for **3/2010=58.2%**
- Working together we can meet or surpass the new goal • • • • • • • • •

# How to Improve AVF Rates

- The Medical Director Must Take the Lead
- A culture of Continuous Improvement needs to exist
- Each clinic should have a Vascular Access Coordinator
- Refer to surgeons who are proficient in AVF creation
- Educate patient & family on the benefits of AVF
- Early referral of CKD stage 4 for access evaluation
- Review staff cannulation skills
- Assess newly created fistulae for function at 4 weeks

# CQI or QAPI= Improvement

- Define barriers to improvement through root cause analysis
- Develop strategies to overcome the barriers
- Include all staff in the process
- Set a time-frame and implement a corrective plan of action
- Track improvement in AVF rates monthly after collecting baseline data
- Re-assess progress to sustain gains

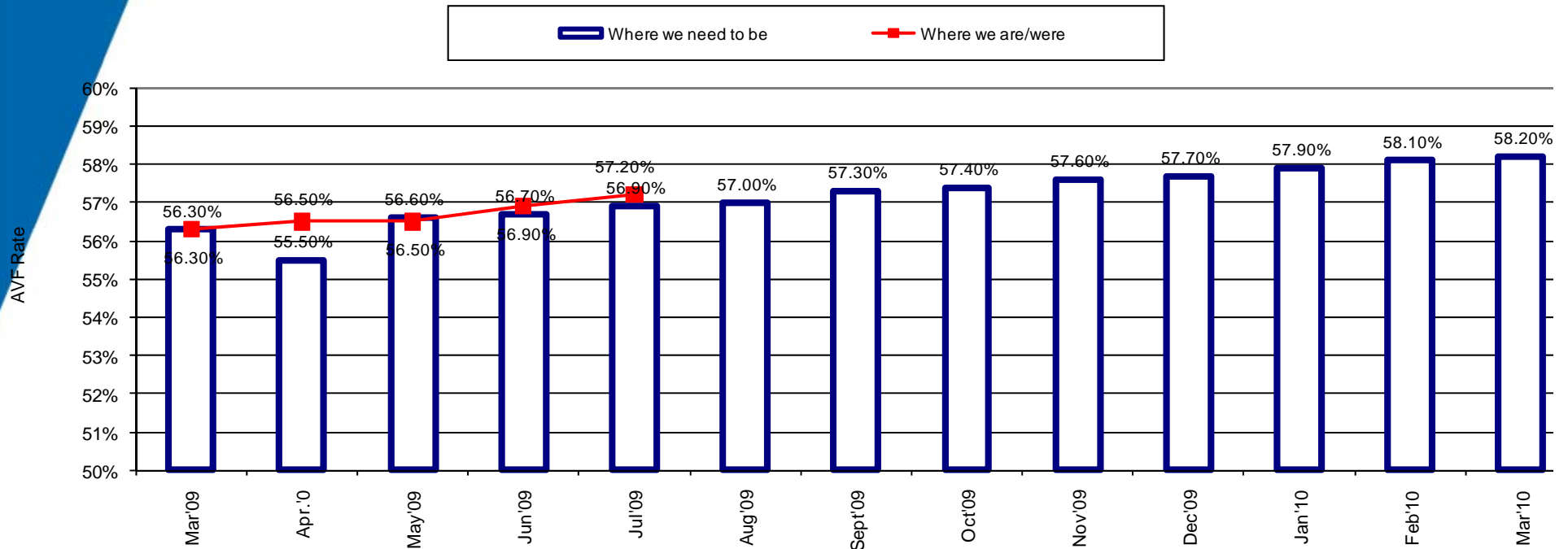


# Considerations for an Action Plan

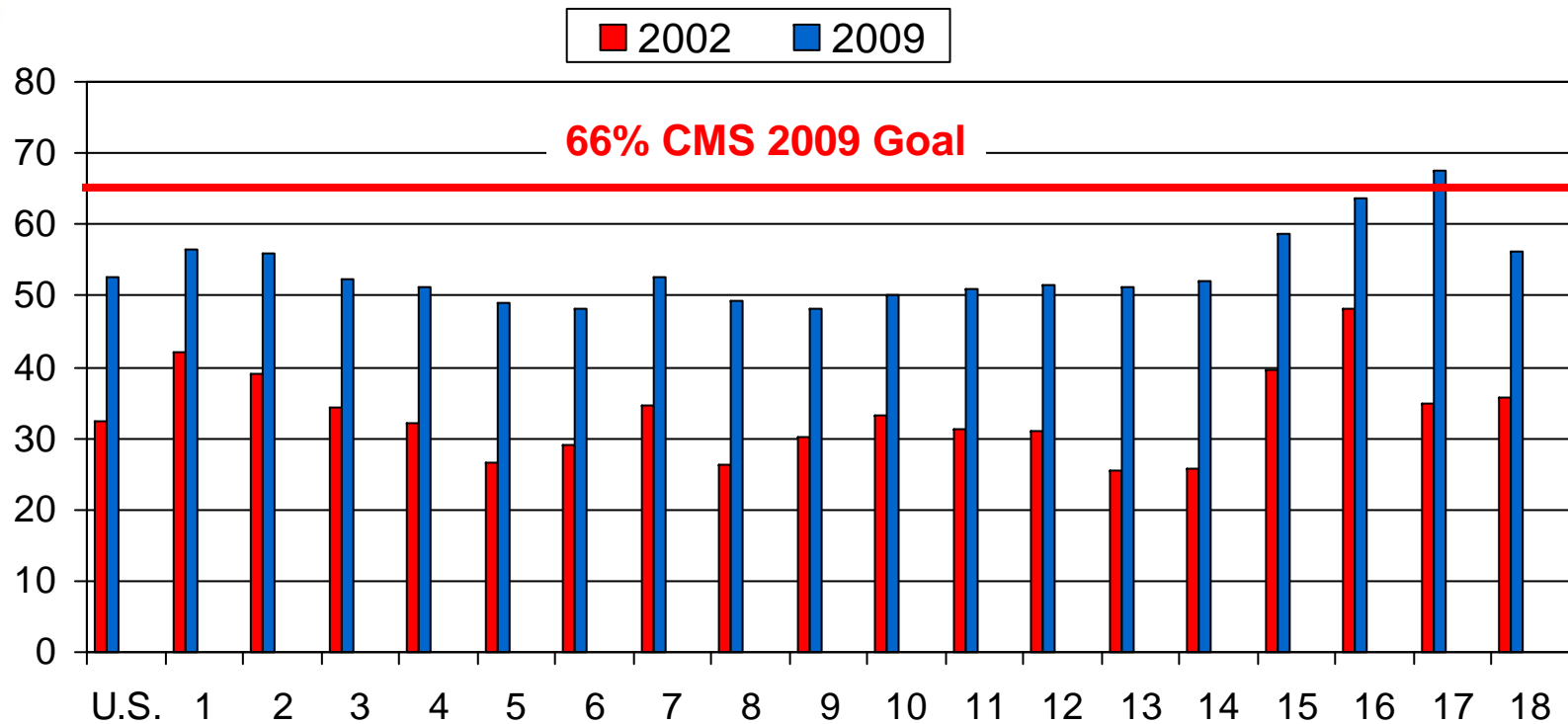
- Create an access team
- Early access education for potential patients in the CKD clinic
- Educate the ER physicians, medical and surgical house staff, nephrologists – to preserve veins, avoid PICC lines in all CKD patients
- Record surgeon & all procedures or events associated with each patient's vascular access as part of CQI tracking
- Venous mapping for all patients referred for access surgery
- All catheters evaluated for permanent vascular access
- Improve communication with the vascular surgeons & interventional radiologist for timely service
- Implement the button hole technique

# NW 1 AVF Rate: Where We Need to be Each Month => 58.2% Goal by 3/2010

Assuming Equal Growth each Month



# U.S. and Network's Prevalent AVF Rates Pre and Post Fistula First Initiative



Source: 2002 CPM Data & 7/12/09 Dashboard with May 2009 data

## Need Help? Call the Network

- On site visits to assist in quality improvement in vascular access management
- Distribution of quarterly data to providers to track progress
- Creation of patient education video on benefits of AVF
- Distribution of tools for staff education on vascular access & cannulation skills
- Educational WebEx on access assessment & cannulation, the button hole technique

# Prevalent AVF Percent by State

## Need more clinics >50%

AVF %	CT	MA	ME	NH	RI	VT	Total
10% or<	0	2	0	0	0	0	2
10 - 20%	0	1	0	0	0	0	1
30-40%	1	2	0	0	0	1	4
40-50%	12	17	2	0	1	0	36
50-60%	13	26	8	1	4	4	53
60-70%	9	14	4	4	7	1	39
=>70%%	2	9	4	5	3	0	23

Everyone has a role in creating success .....it will take a team effort to reach the goal of 66% for Prevalent AV Fistulas set by CMS





# Fistula First Showcase of Stars



## Success Acknowledged

- The Network wants to commend dialysis clinics that have demonstrated Continuous Quality Improvement between July 2008 & June 2009
- **Champion** facilities are clinics that have had a 70% AVF rate or greater all year
- **Exceptional** performers have maintained AVF rates of 66% or greater for all 12 months
- **Outstanding** facilities have maintained an AVF rate of 60% or greater for 12 months



## Champion Facilities ≥ 70% Consistent AVF Rate 7/08 to 6/09

- ARA West Warwick
- FMC Lancaster
- FMC Manchester
- FMC New Hampshire
- DCI-Walden Pond
- Martha's Vineyard Hospital
- VA-Boston
- FMC-Damariscotta
- VA-Togus



## Exceptional Performers ≥ 66% Consistent AVF Rate 7/08 to 6/09

- ARA East Providence
- ARA Providence
- FMC Dover
- FMC Framingham
- FMC Biddeford
- DaVita-New London



# Outstanding Performance: Prevalent AVF Rate =>60% between 7/08-6/09

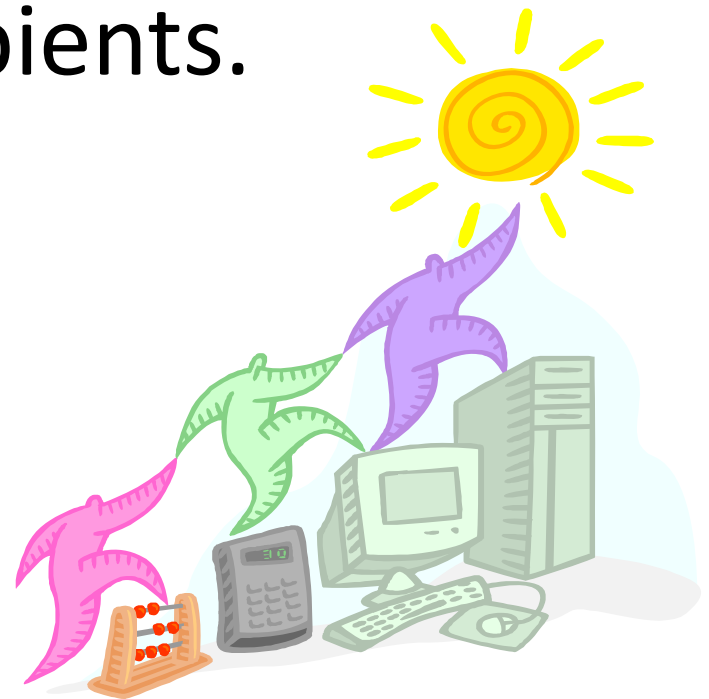
- DaVita-Shelton
- FMC-Forrestville
- FMC-Bath
- DCI-Boston
- DaVita-Salem North East
- NRI-North Andover
- FMC-North Shore Regional
- DCI-Billerica
- DaVita-Worcester
- ARA-Fall River
- Central New Hampshire
- FMC-Somersworth

DaVita Nashua  
ARA-Woonsocket  
DSI-North Providence  
ARA-Tiverton



Congratulations  
to all the recipients.

Let's make the  
awards list  
even longer  
next year!



# Fistula First Information and Tools

- Visit the National Fistula First Project Website at: [http:// www. fistulafirst.org](http://www.fistulafirst.org)



- Visit the Network Website at: <http://www.networkofnewengland.org>

- Call the Network of New England for CQI/QAPI assistance at: [203-387-9332](tel:203-387-9332)

