



Fistula First Initiative Update

19th Annual Meeting of the ESRD
Network of New England

Sturbridge, MA

October 11, 2007

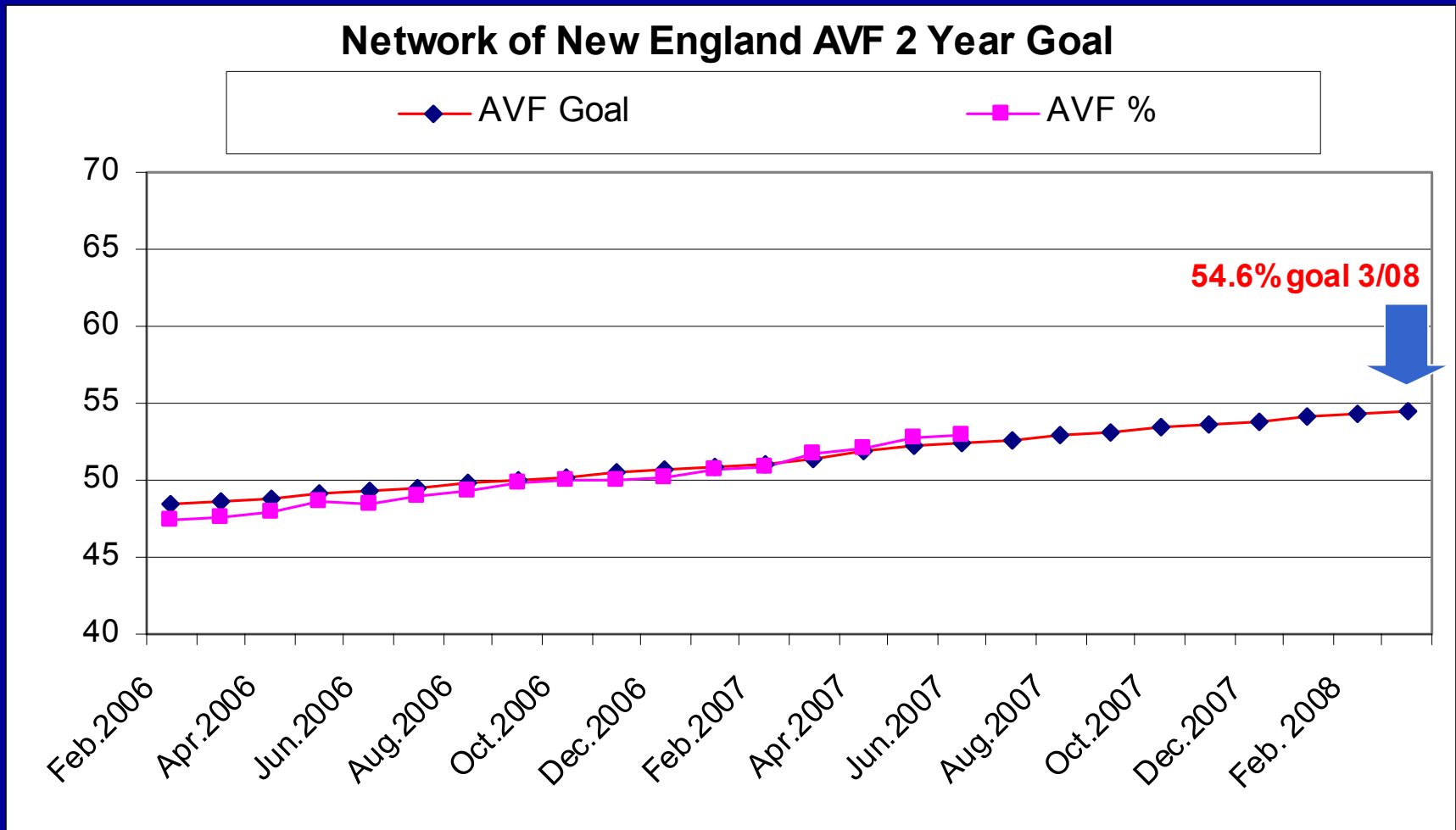
Paul B. Nussbaum, MD

Network Medical Review Board Chairman

Progress Has Been Made

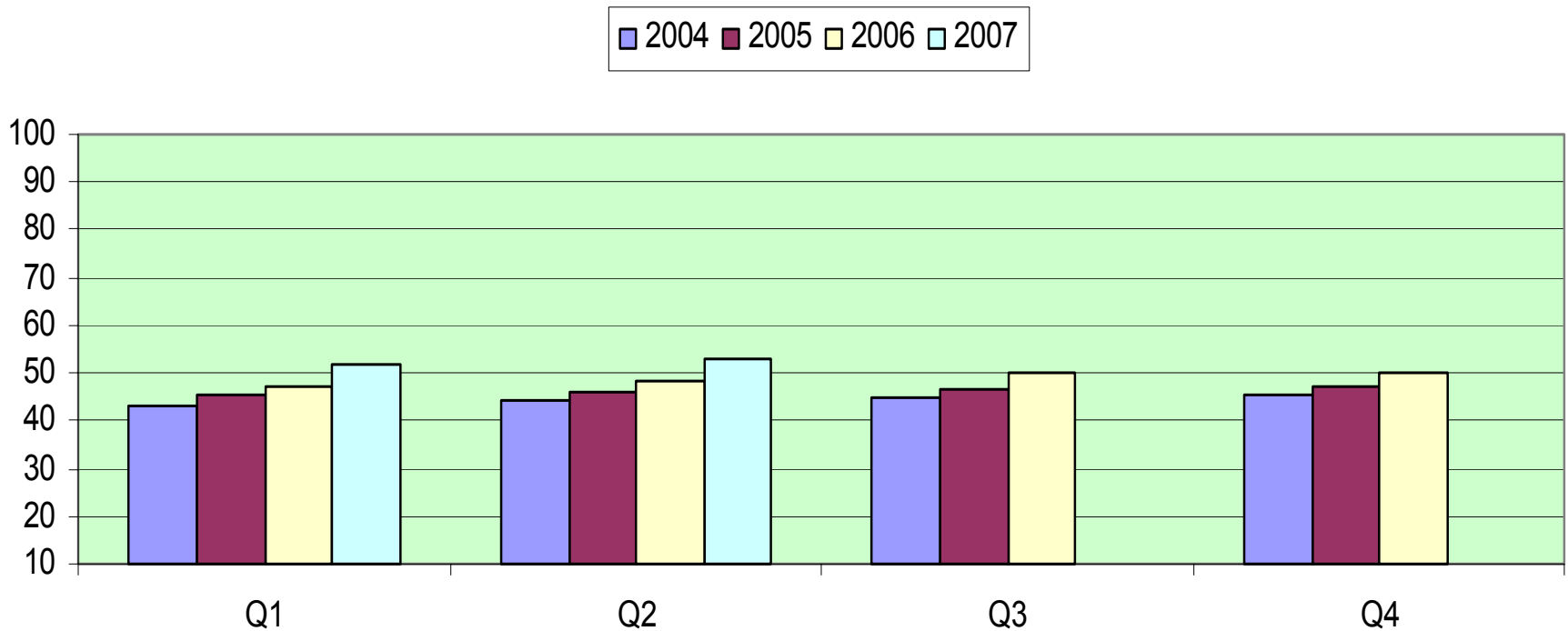
- The Prevalent AVF rate of New England has Improved 10.9% since the start of the initiative
- Your Network met the goal set by CMS in March 2007 (51.7%) for last year's contract
- The New England region ranks second nationally

On Track to Meet the 3/08 Goal



Prevalent AVF Percent Improved Each Quarter

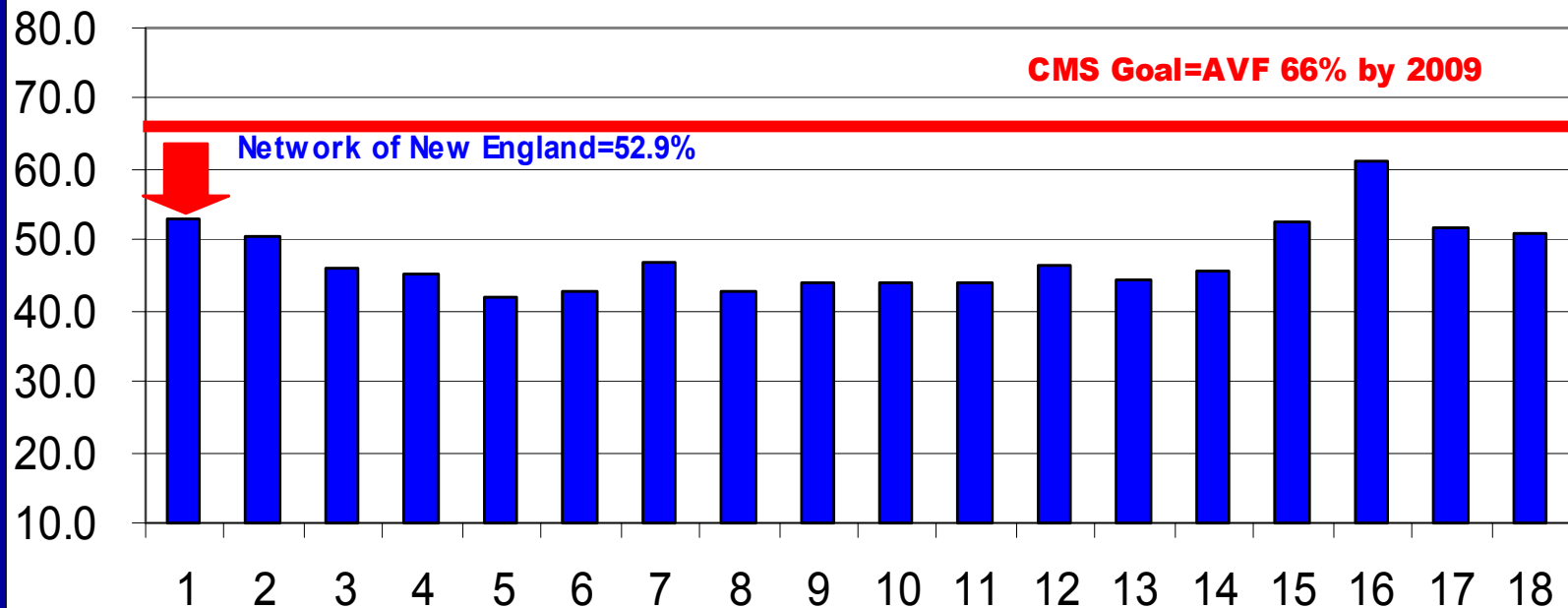
Network of New England Prevalent AVF Quarterly Rate 2004 to 2007



Networks' Prevalent AVF Rates

18 ESRD Network's Prevalent AVF Rates
June 2007 US Rate=46.8%

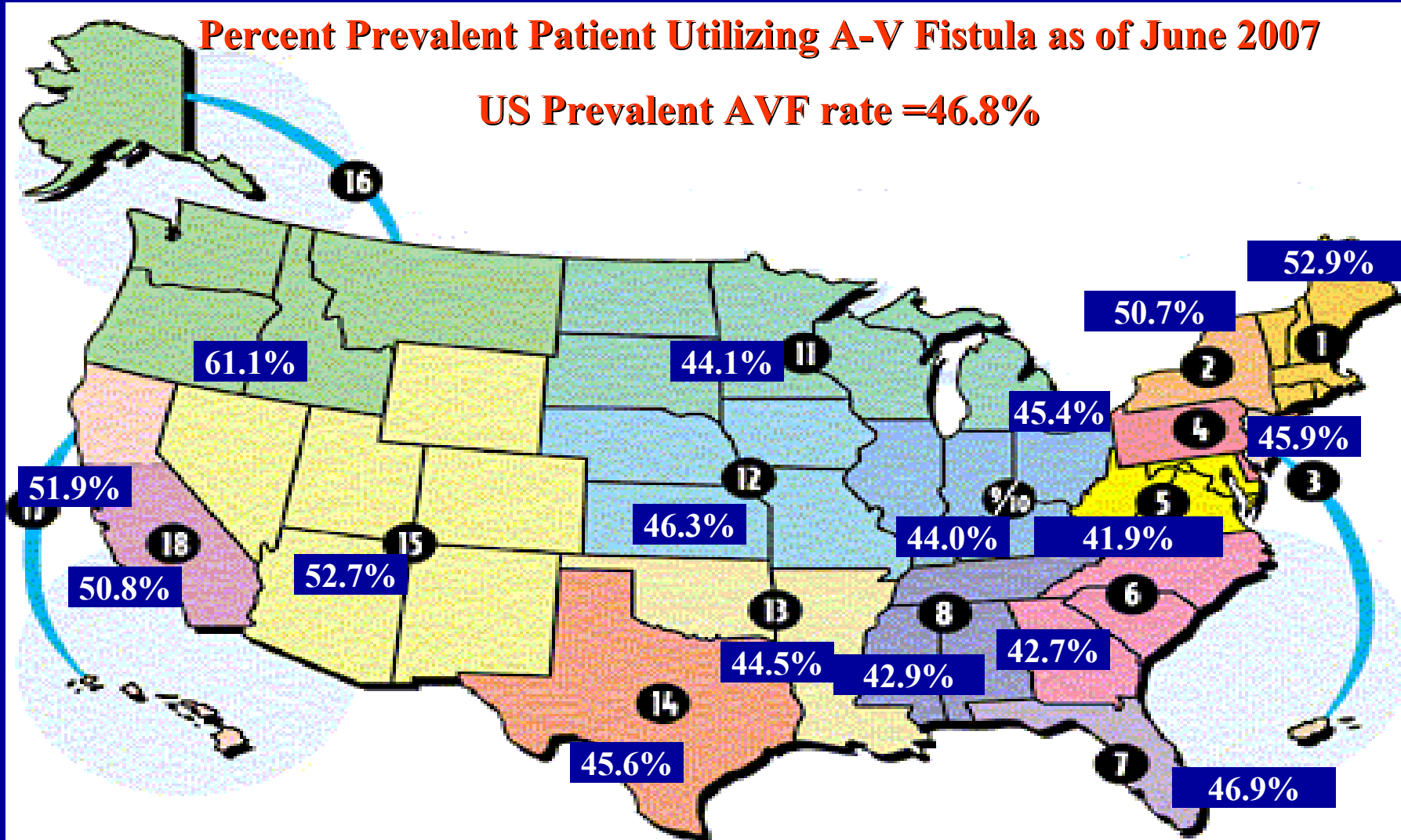
■ Prevalent AVF %



End Stage Renal Disease Network Regional Map

Percent Prevalent Patient Utilizing A-V Fistula as of June 2007

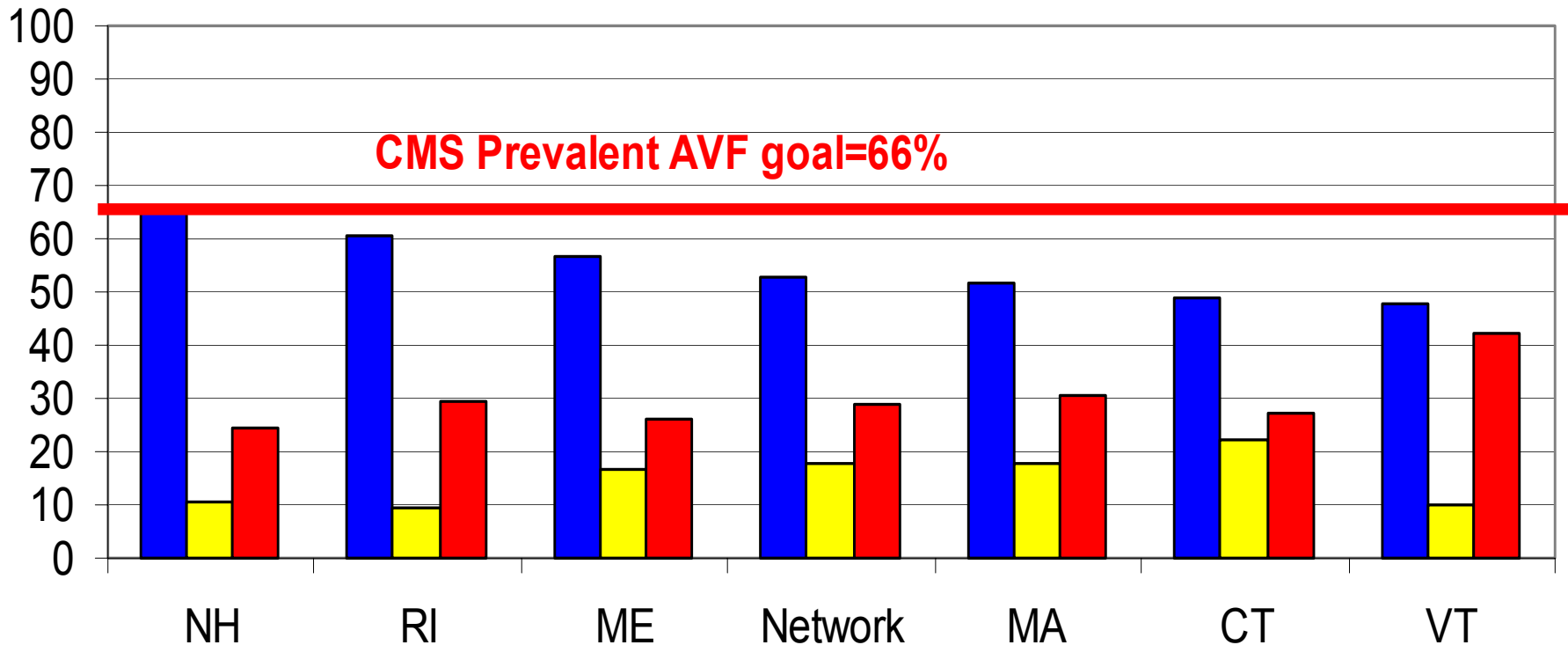
US Prevalent AVF rate = 46.8%



Date Source: FF Dash Board
100% of facilities may not of reported into each Network

Prevalent Vascular Access Rates By State & Network of New England June 2007

■ AVF ■ AVG ■ Catheter



New Hampshire Number 1!



- The state of New Hampshire has 10 dialysis clinics. The clinics' averaged a remarkable 64.4% prevalent AV fistula rate which is the highest average in the country!

Number of Clinics in each AVF % Range

%	CT	ME	MA	NH	RI	VT	NW
20-30	1	1	1	0	0	0	3
30-40	6	1	5	0	1	1	14
40-45	3	2	11	0	2	2	20
45-50	4	1	13	1	1	1	21
50-60	15	4	24	2	4	2	52
60-69	2	7	14	4	3	1	31
>70	0	2	2	3	6	0	13

Source: June 2007 Provider reports

**Total 153
Providers**

All Can Find Opportunities to Improve

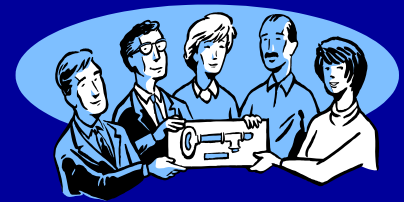
- Clinics that are less than 40% should contact the Network for assistance in QI strategies
- Clinics greater than 40% but less than 50% should define barriers & establish an action plan to overcome them
- Clinics greater than 50% should strive to get closer to 60%
- Clinics at 66% or higher should maintain excellence, share successful strategies with other providers.



One Clinic's Action Plan

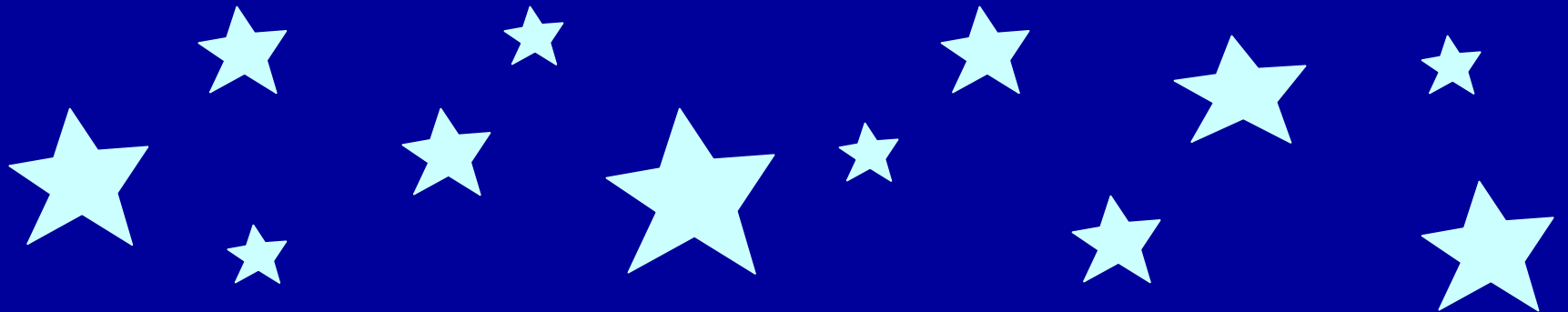
- Create an access team
- Education for local clinic patients
- Education for ED physicians, medical and surgical housestaff, nephrologists – to save non-dominant arms
- Avoid PICC lines placed in potential ESRD patients
- Referral to nephrologist when GFR < 30
- Venous mapping for all patients referred for access surgery
- Develop protocols for non-invasive studies for new AVFs

Everyone has a role in
creating successit will
take a team effort to reach
the goal of 66% for
Prevalent AV Fistulas set
by CMS for 2009





Fistula First Showcase of Stars



Success Acknowledged

The Network wants to commend clinics that have demonstrated Continuous Quality Improvement for Patient's Vascular Access

- **Superior facilities are clinics that have a 66% AVF rate or higher for all 12 months**
- **Exceptional clinics have maintained AVF rates of 60% or greater for all 12 months**
- **Champion facilities have shown an improvement of 15% or greater in their AVF rates over the 12 months**



Superior Vascular Access Management AVF => 66%

Clinics with >6 patients

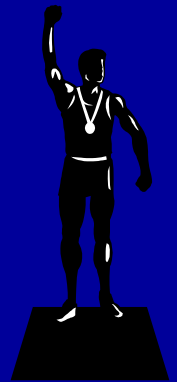
- **MaineGeneral Medical Center**
- **Skowhegan**
- **ARA Dialysis Center of Tiverton, RI**
- **ARA Dialysis Center of E. Providence, RI**
- **ARA Dialysis Center of Providence, RI**
- **VA Medical Center-Providence**
- **FMC North Shore Regional**
- **FMC-N.H. Kidney Center**
- **DaVita-Worcester**



Exceptional Performance

Providers with consistent excellence in their prevalent AVF rates: 60% or greater all year

- **FMC-Portland, ME**
- **FMC-Coastal Dialysis Center**
- **FMC-Casco Bay Dialysis Facility**
- **DCI-Walden Pond**
- **Central New Hampshire**
- **FMC-Somersworth Dialysis**
- **DaVita-Nashua**
- **ARA Dialysis of West Warwick**
- **VA Medical Center-Togus**
- **VA Medical Center-Boston**



Most Improved Facilities

Providers with $\geq 15\%$ rate of improvement in the past 12 months:

- DaVita-Stamford Dialysis
- FMC-Forestville
- DaVita-Woburn Dialysis
- FMC-E. Springfield Dialysis
- DaVita-Salem Northeast Dialysis
- FMC-Ludlow Dialysis Center
- FMC-South County Dialysis Center
- FMC-Newburyport



AVF Improved 15% or >

- ARA-Dialysis Center of West Warwick
- ARA-Dialysis Center of Pawtucket
- Fletcher Allen Healthcare-Barre Satellite
- Fletcher Allen Healthcare-St. Albans
- FMC-Seacoast Dialysis-showed the greatest improvement; 32.1%!!!!

**Congratulations to All the
Recipients.**

**Let's make the Awards list
even longer next year!**



Fistula First Information & Tools

- Visit the National Fistula First Project Website at: [http:// www. fistula first. org](http://www.fistulafirst.org)
- Visit the Network Website at: <http://www.networkofnewengland.org>
- Call the Network of New England for CQI assistance at: 203-387-9332

